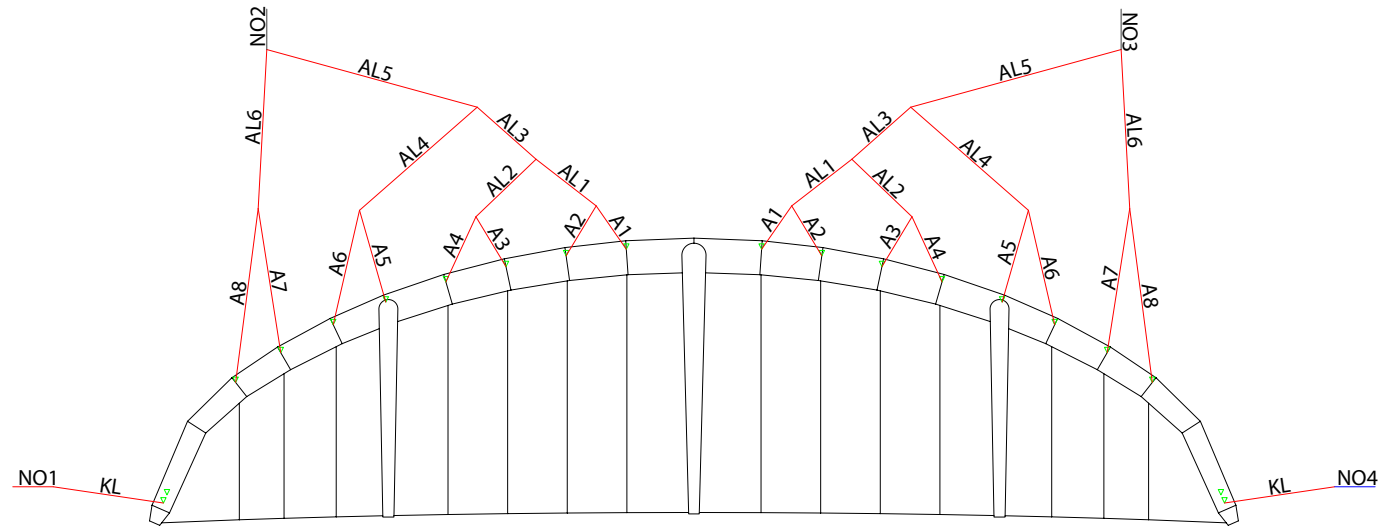


## VORTEX ULTRA-X RIGGING DIAGRAM

BRIDLE LINES SHOULD BE REGULARLY CHECKED AND MAINTAINED IN THE CORRECT TRIM OR THE KITE WILL NOT PERFORM AS DESIGNED. IF THEY ARE WORN OR NOT TO FACTORY SPECIFICATION (+ OR - 20MM) THEY SHOULD BE REPLACED. REPLACEMENTS CAN BE ORDERED INDIVIDUALLY OR AS A FULL SET FROM YOUR SHOP/DEALER.

1. Open the kite out in a large space.
2. Inspect all bridle lines for wear/damage. Take note or label lines to be replaced.
3. Use a tape measure to measure the remaining bridles. Ask a friend to hold the end of the tape measure and bridle line in position to get an accurate measurement.
4. Pull on the line to add some tension and note each measurement.
5. Refer to the bridle line measurements sheet and rigging diagrams. Take note or label lines to be replaced.
6. Replace all bridle lines as necessary.



### BRIDLE LINE LENGTHS. ALL MEASUREMENTS IN MM

LINE	5m	6m	7m	8m	9m	10m	11m
A1	405	450	490	520	575	610	640
A2	225	250	275	295	330	350	370
A3	335	370	400	430	455	480	505
A4	165	185	205	220	235	245	255
A5	325	360	390	415	440	465	485
A6	180	200	220	230	250	260	275
A7	350	390	420	450	480	500	525
A8	225	245	275	290	310	325	340
AL1	585	615	700	745	770	810	850
AL2	245	255	290	310	330	345	365
AL3	475	560	560	600	640	670	705
AL4	325	380	385	410	435	455	480
AL5	765	840	915	970	1030	1080	1135
AL6	690	760	815	870	930	975	1025
KL	465	510	590	570	620	657	690